

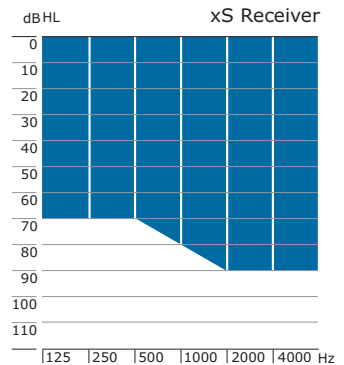
Technical data

sona:vogue ric

700/500/300

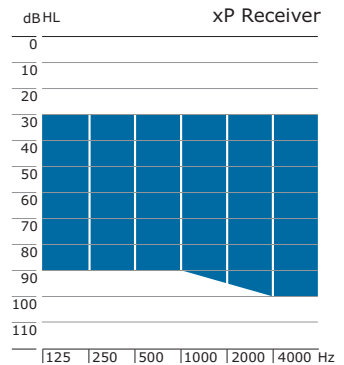


: Mild to severe hearing loss
 : 312 battery
 : flex:performance



Key values

	xS Receiver		xP Receiver	
	Ear simulator	2 cm ³	Ear simulator	2 cm ³
Max. power output	121 dB SPL	112 dB SPL	132 dB SPL	126 dB SPL
Max. gain	56 dB	45 dB	65 dB	55 dB
Frequency range	< 100 – 8800 Hz	< 100 – 8500 Hz	< 100 – 7200 Hz	< 100 – 6000 Hz
Battery current (working)	1.0 mA	1.0 mA	1.1mA	1.1mA



Feature overview

	300	500	700
Fully automatic	•	•	•
Automatic environment detection	•	••	•••
Noisy environments	•	•	•
Quiet environments		•	•
Music			•
Directionality	•	••	•••
Feedback phase canceler	•	•	•
Digital noise canceler	•	•	•
Impulse sound limiter		•	•
Wind noise canceler			•
Reverberation canceler			•
Data logging	•	•	•
Channels	6	12	18
Remote control	•	•	•

Color options

- White metallic H4
- Silver 40
- Dark gray metallic H7
- Taupe metallic H8
- Brown metallic H9
- Beige H0

Fitting software

sona:fit 1.3 or higher with HI-PRO or NOAHlink

www.sonapro.com

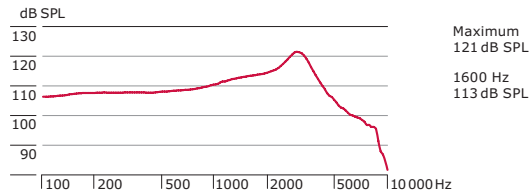
Ear simulator data

EN/IEC 60118 and IEC 60711

2 cm³ coupler data

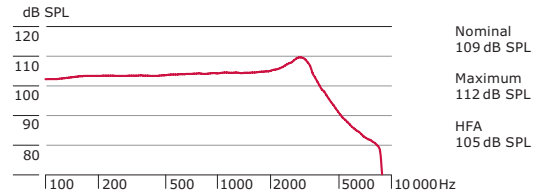
ANSI S3.22-2003

Output sound pressure level



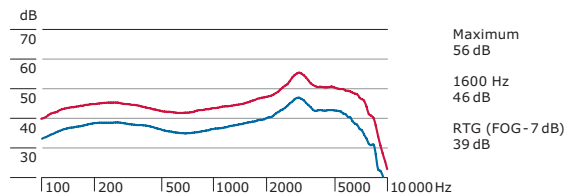
— Full-on gain (Input 90 dB SPL)

Output sound pressure level



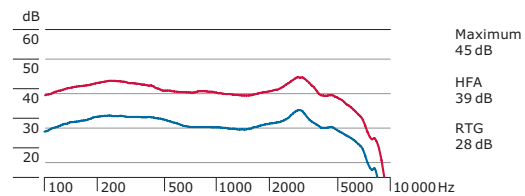
— Full-on gain (Input 90 dB SPL)

Acoustic gain



— Full-on gain (Input 50 dB SPL) — Reference test gain (Input 60 dB SPL)

Acoustic gain



— Full-on gain (Input 50 dB SPL) — Reference test gain (Input 60 dB SPL)

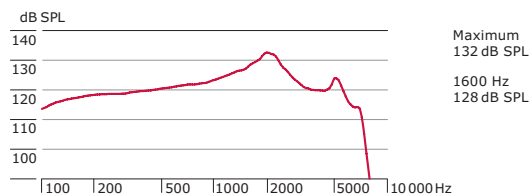
Frequency range	< 100 – 8800 Hz		
Total harmonic distortion	500 Hz 1.5%	800 Hz 2.0%	1600 Hz 2.0%
Equivalent input noise level	19 dB SPL		
Battery current	Quiescent 0.9 mA	Working 1.0 mA	

Frequency range	< 100 – 8500 Hz		
Total harmonic distortion	500 Hz 1.5%	800 Hz 2.0%	1600 Hz 2.0%
Equivalent input noise level	19 dB SPL		
Battery current	Quiescent 0.9 mA	Working 1.0 mA	

Ear simulator data

EN/IEC 60118 and IEC 60711

Output sound pressure level

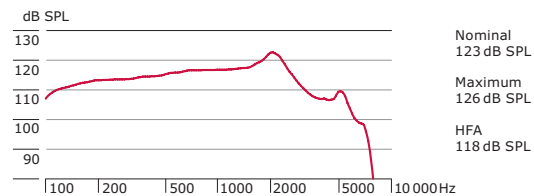


— Full-on gain (Input 90 dB SPL)

2 cm³ coupler data

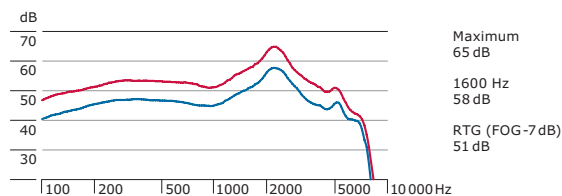
ANSI S3.22-2003

Output sound pressure level



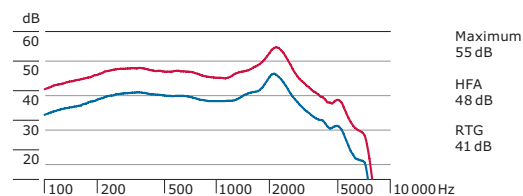
— Full-on gain (Input 90 dB SPL)

Acoustic gain



— Full-on gain (Input 50 dB SPL) — Reference test gain (Input 60 dB SPL)

Acoustic gain



— Full-on gain (Input 50 dB SPL) — Reference test gain (Input 60 dB SPL)

Frequency range	< 100 – 7200 Hz		
Total harmonic distortion	500 Hz 1.5%	800 Hz 1.5%	1600 Hz 1.0%
Equivalent input noise level	19 dB SPL		
Battery current	In Ruhe 1.0 mA	In Betrieb 1.1 mA	

Frequency range	< 100 – 6000 Hz		
Total harmonic distortion	500 Hz 1.0%	800 Hz 1.0%	1600 Hz 1.0%
Equivalent input noise level	19 dB SPL		
Battery current	In Ruhe 1.0 mA	In Betrieb 1.1 mA	

sona:vogue ric can be fitted with a standard xReceiver (xS Receiver) or a power xReceiver (xP Receiver). Unless otherwise specified, all data obtained are measured in a closed configuration with a coupling disc onto a HA-1 coupler (ANSI-S3.7-1995) or an occluded ear simulator (EN 60711, coupling arrangement according to fig. 4 in the test standard), and in the sona:fit measurement settings.

We reserve the right to change specification data without notice as improvements are introduced.

Note: Using pure tone measurements with a digital hearing instrument can result in a wavy frequency response. This is an artifact resulting from the use of a narrowband input signal and does not reflect the actual performance with naturally occurring broadband input signals.