

## Follow-up appointment

sona:fit enables easy hearing instrument adjustments using two different strategies: **Fine tuning** and **Auto tuning**.

Connect and detect the hearing instruments in the **Instruments** screen.

- (A) Data logging information is displayed in the header during follow-up visits.
- (B) **Fine tuning** offers options to manually adjust response curves and hearing instrument features (extended mode).

You can adjust your gain settings in up to 18 channels, depending on the performance level of the hearing instrument:

- : Overall gain – all sounds
- : Very soft (TK) – knee points of compression
- : Soft (G40) – gain at 40 dB input
- : Medium loud (G60) – gain at 60 dB input
- : Loud (G80) – gain at 80 dB input
- : Very loud (MPO) – max. output
- : Compression – compression ratio

To enable the extended mode, click the **Extended mode** button.

- (C) Click the **Feature** tab to access the hearing instrument features. The accessible features depend on the performance level and the selected base setting.

In the Extended mode, changes are applied to the selected base setting.

In the Standard mode, changes are applied to all base settings.

- (D) **Auto tuning** allows quick adjustments according to the issues reported by the client.

Choose from the four categories of commonly reported hearing problems, select the situation in which the problem occurs and click the respective button to solve the problem. You can easily undo the adjustments with the Undo button.

- (E) You can use the media player to play natural sounds for a more realistic fitting environment.



## Performance level change & Device deactivation

Make sure that the hearing instruments are connected to sona:fit and that your computer is online.

- (A) Click on one of the **Performance level** buttons in the **Instruments** screen to trigger the performance level change process. You are guided through three steps:

1. **Instruments** – choose the target performance level
2. **Account** – check account and payment options, enter references (optional)
3. **Confirm** – check all entries and confirm

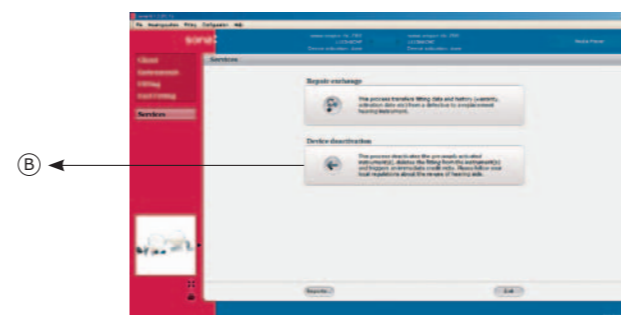
Fine tuning settings are retained where applicable.

- (B) To deactivate the hearing instruments, go to **Services** and click **Device deactivation**. After you have logged in you will be guided through three steps:

1. **Instruments** – select the hearing instrument to be deactivated (check the box)
2. **Account** – check account and enter references (optional)
3. **Confirm** – check all entries and confirm

The hearing instruments are now deactivated and can be returned to your smart:stock.

Please respect your local regulations on the reuse of hearing instruments.



## client:view

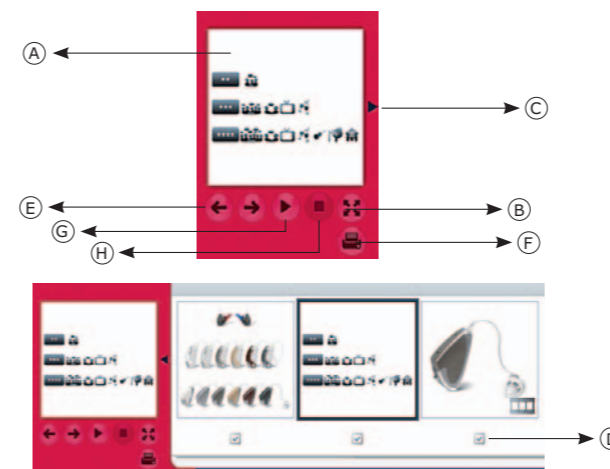
**client:view** supports you during the counseling and fitting process. Ideally client:view is displayed on a second monitor.

The control panel offers the following options:

- (A) The current content is displayed as thumbnail
- (B) Show and hide client:view
- (C) View all client:view screens for the active sona:fit screen
- (D) Disable and enable the selected screen
- (E) Click forward/back
- (F) Print client:info

If a movie is available in the screen:

- (G) Play/Pause
- (H) Stop



# Desktop fitting guide sona:fit 1.3

## sona:fit and sona:vogue hearing instruments – a winning combination

This desktop fitting guide describes how to fit sona:vogue products successfully.

### New in sona:fit 1.3

- : sona:vogue ric
- : KeyPilot remote control
- : More flexibility in unique:fit
- : Improved Auto tuning and Fine tuning
- : client:info report
- : Extended summary in business processes

## Programming

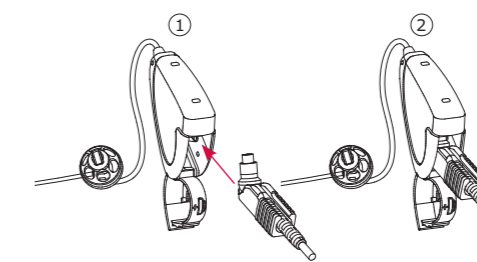
sona:fit supports NOAHlink and HI-PRO.

### Use the following programming cables:

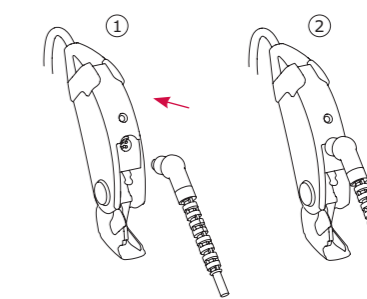
- : Programming cable sona »A« for sona:vogue micro and sona:vogue ric
- : Programming cable sona »B« for sona:vogue intro
- : Both cables are available in two lengths: 0.5 m for NOAHlink and 2 m for HI-PRO

- ⚠ Use the red cable for the right and the blue cable for the left instrument. sona:vogue instruments are programmed without a battery inserted.

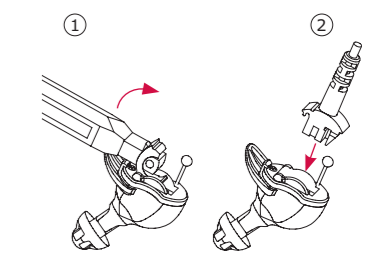
**sona:vogue ric**  
programming cable sona »A«



**sona:vogue micro**  
programming cable sona »A«

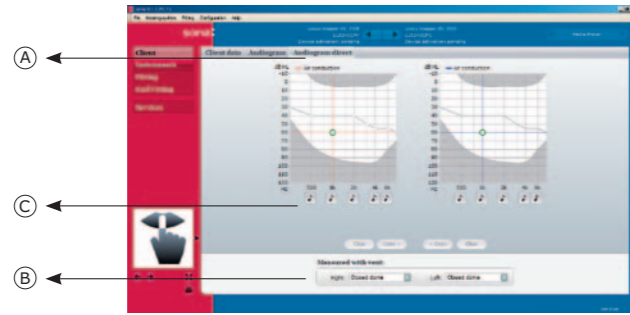


**sona:vogue intro**  
programming cable sona »B«



## Client

- Ⓐ **Audiogram direct** is used to determine the client's hearing threshold using the hearing instrument.
- Ⓑ Select the venting to be used for measuring from the drop down menu before you start.
- Ⓒ To play a pure tone through the hearing instrument, select the desired measurement frequency and click the respective button. The level is automatically increased in 5 dB steps as long as the button is pressed. Release the button as soon as the client can hear the tone. The air conduction threshold is saved after releasing the button.



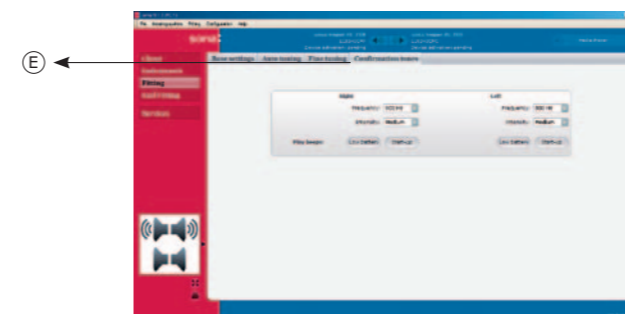
## Instruments

- Ⓐ Select the desired fitting interface (HI-PRO/NOAHlink) from the drop-down menu, then click the button to trigger the detection.
- Ⓑ Select the **Performance level** by clicking the respective button.
- Ⓒ **Instrument set-up** shows the recommendations made by sona:fit, which are based on the audiogram and the detected instrument model.
  - To manually customize the acoustic coupling, click button »C«.
  - The suggested parameters are highlighted.



## Fitting

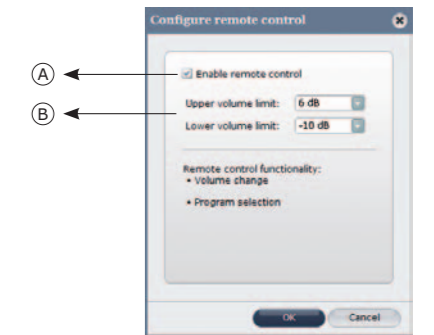
- Ⓐ Click **Fitting** to enter the fitting screens.
- Ⓑ **Base settings** covers all adjustment tools required during the first fitting appointment.
- Ⓒ Click **unique:fit** to perform all required steps for a precise and individual first fit. Perform all available tests in a quiet environment and advise your client to remain quiet.
  - All tests can be performed for the left and right side individually by clicking **Test right/Test left**.
  - The results can be individually reset for the left and right side.
  - Clicking **Calculate** creates the first fit.
- Ⓓ The **Loudness & Acclimatization** manager can be used to automatically increase the gain while the client is using the device.
  - Set the current level.
  - Set the target level via drop-down menu.
  - Set the speed at which the gain changes (duration per 10% increase).
  - You will be informed about how many days remain until the target level is reached (estimate based on 8 hours wearing time per day).
- Ⓔ Select **Confirmation tones**.
  - Adjust frequency and intensity.
  - Demonstrate by clicking on the respective button.



## Remote control (KeyPilot)

sona:fit 1.3 supports the use of a KeyPilot remote control with sona:vogue hearing instruments. To enable KeyPilot go to **Hearing system** in the menu bar and select **Configure remote control...**

- Ⓐ Check **Enable remote control**.
- Ⓑ Set upper and lower limits of the hearing instrument's volume control.



## End Fitting

- Ⓐ Click **End Fitting**.
- Ⓑ Click **Device activation** to activate the hearing instrument.
 

Settings are saved to the hearing instruments and database. Activation of the hearing instruments is registered at sona. After login, you will be guided through three steps:

  1. **Instruments** – extend warranty (optional)
  2. **Account** – check account and payment options, enter references (optional)
  3. **Confirm** – check all entries and confirm
- Ⓒ Click **Save** to save the settings to the hearing instrument and/or the database (only for activated instruments).

